



Department of Audiology & Speech Language Pathology  
SRM Medical College Hospital & Research Centre

---

For information about this department and these courses, kindly visit the website

<https://www.srmist.edu.in/medicine/health-science/audiology-speech-language-pathology/about>

Important note: You can even simply, type SRM Audiology, in your browser and reach this web page. But, if you do this, you will have to confirm carefully, that you have indeed reached the OFFICIAL website.

# Screen shot of our web page

The screenshot shows a web browser window displaying the website for the Department of Audiology and Speech Language Pathology at SRM Institute of Science and Technology. The browser's address bar shows the URL: [srmist.edu.in/medicine/health-science/audiology-speech-language-pathology/about](http://srmist.edu.in/medicine/health-science/audiology-speech-language-pathology/about). The website header includes navigation links: HOME | EMAIL | CONTACT US, and a secondary menu: STUDENTS | FACULTY | ALUMNI | PARENTS | VISITORS | CAREERS. The SRM logo is prominently displayed. A main navigation menu lists: About SRM, Admission, Academics, Research, Campus Life, Placements, and Group Institutions. The breadcrumb trail reads: Home > Department Of Audiology And Speech Language Pathology. The page title is "DEPARTMENT OF AUDIOLOGY AND SPEECH LANGUAGE PATHOLOGY". A left sidebar menu contains: About The Department, Faculty, Services Offered - Speech Language Pathology, Services Offered - Audiology, Camps And Outreach Activities, Research Focus, Courses Offered, and Contact US. The main content area features a photograph of a healthcare professional in a white lab coat interacting with two students in a library or study area. Below the image, the text describes SRM Institute of Science and Technology (SRMIST) as a leading educational institution in India, accredited by NAAC (UGC) with the highest grade of A++ and a CGPA of 3.55 out of 4.0. It was established in 2002 by Dr. T. R. Paarvendhar M.P. and covers all areas of knowledge with over 40,000 students and 3,000 faculty members. The text highlights the institution's community orientation and the importance of audiology and speech language pathology for inclusivity. It notes that SRMIST started the BASLP course in 2007. Further details mention the SRM Medical College's offerings (MBBS, postgraduate courses, etc.) and the department's state-of-the-art facilities. The final paragraph states that the department has thrived since 2013, starting a MASLP postgraduate course with 10 seats, increasing to 24 seats in 2019-20, and expects to increase to 40 seats in the following year.

SRM Institute of Science and Technology (SRMIST) is a leading educational institution in India, accredited by NAAC (UGC), with the highest grade namely, A++ with CGPA OF 3.55 out of 4.0 SRMIST was established in 2002, by the eminent educationist, Dr. T. R. Paarvendhar M.P., with a lofty objective to empower the future citizens with the skillsets in building the nation. SRMIST now covers all areas of knowledge and has more than 40,000 students and 3000 faculty members.

Our Institutions have a great community orientation. Inclusive education is one facet of this focus. The Audiologists and Speech Language Pathologists form an important fulcrum for inclusivity. However, in India, there is a paucity for these professionals. To meet this demand, SRMIST started the BASLP course in 2007.

SRM Medical College conducts MBBS, medical postgraduate courses, super specialty courses, and allied health science courses. The daily outpatient attendance of SRM Medical College & General Hospital exceeds 1200 patients. The hospital has excellent laboratories, libraries, animal houses, digital medical records, hostels, playgrounds, gymnasium, etc. Our students share all the infrastructural facilities of the College and the Hospital. The Audiology and Speech Language Pathology department is equipped with state-of-the-art instruments and laboratories for clinical and research purposes.

In this conducive ambience, the Audiology and Speech Language Pathology department has thrived well. In the year 2013, a postgraduate course in this specialty (MASLP) was started with an annual intake of 10 postgraduate students. In the academic year 2019-20, we increased the number of postgraduate seats to 24 (twelve in MSc Audiology course and twelve in MSc Speech Language Pathology). All the courses are in full compliance with the regulations of the Rehabilitation Council of India and have been duly recognized. In the ensuing academic year, we expect to increase the B. ASLP seats to 40.

Admission Enquiry

Unique advantage of SRM, Katankulathur campus - All fields in one place



# SRM Medical College Hospital & Research Centre



Hospital

Audiology & Speech Dept

Medical College

Verdant and  
Expansive Campus

SRM Medical College Hospital & Research Centre



Hospital

Medical College



## Unique advantage of SRM Dept of Audiology & Speech Language Pathology



Conveniently situated inside a Medical College & a tertiary level Hospital,  
with all super specialities



**SRM**  
INSTITUTE OF SCIENCE & TECHNOLOGY  
*(Deemed to be University u/s.3 of UGC Act, 1956)*



Department of Audiology & Speech Language Pathology  
SRM Medical College Hospital & Research Centre

---

The courses available in this department are

B.ASLP (Bachelor of audiology & Speech Language Pathology)

25 seats

4 years

MSc (Speech Language Pathology)

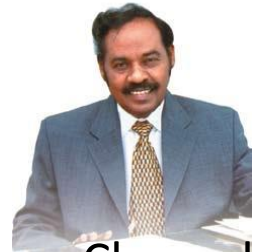
12 seats

2 years

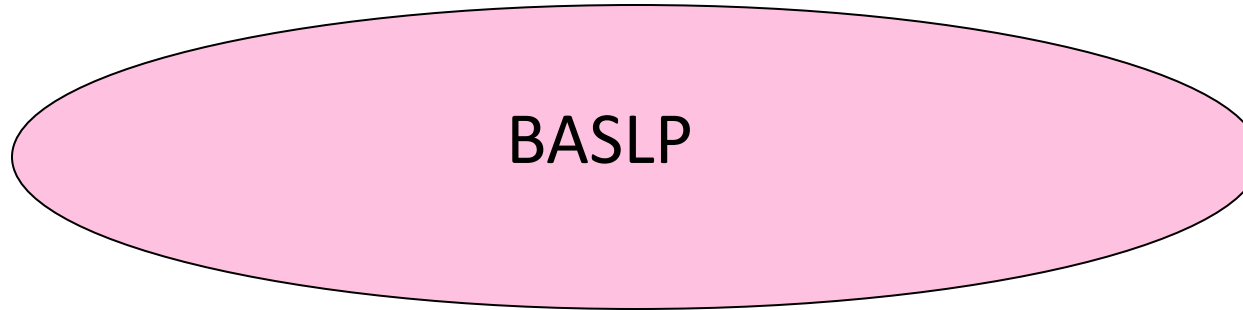
MSc (Audiology)

12 seats

2 years



Hon. Chancellor



Bachelor of Audiology and Speech Language Pathology



## BASLP is an exciting course with good scope + good job opportunities in india & abroad

This course deals with Hearing, Speech, Swallowing & Balance difficulties. The patients come from the fields of Ear Nose Throat, Neurology, Paediatrics and Cancer, Stroke, and Automobile accidents. A good audiologist and speech therapist can help them to get rid of their problems. In patients, for whom complete cure is not possible, he can certainly make the quality of life better.

*For example,*

The deaf can hear.

The deaf-mute can speak.

Cancer, Stroke and accident victims can communicate well.

Patients with vertigo can walk and live well.

The stutterer can get rid of it.

Patients with ringing sounds in the ear, can get relief.

## Very good infra structure

Staff Room



Class Room1



Class Room2



Department library with NET



# Very good infra structure



**Speech cubicles**



**Patient interview room**



**Audiometry**

Hearing tests - all modern equipment – hands on access to every student



New born (3 day old) being screened for hearing loss

New technologies & Research initiatives



Speech therapy in progress – Students are taught to tailor the therapy to the individual patient. This helps them in later day private practice.



## Rehabilitation & Empowerment Centre – Practical experience to the students



### Free aids distribution

Vice Chancellor, Pro vice chancellor, Registrar, Director Medical and Health Sciences, Director NIEPMD, Director of Rehabilitation of the differently abled, Govt of Tamilnadu.



**SRM**  
INSTITUTE OF SCIENCE & TECHNOLOGY  
(Deemed to be University u/s.3 of UGC Act, 1956)



Department of Audiology & Speech Language Pathology  
SRM Medical College Hospital & Research Centre

---

### **Additional highlights**

National workshops conducted every year.

Our faculty publish textbooks & research papers

Our students win Best paper awards in  
National & state conferences

Our students get trained in reputed External institutions also  
e.g. National Institute of Empowerment of Persons with  
Multiple Disability (NIEPMD)



## BASLP – Description of the course

Eight semesters (including one year of internship). The annual admissions, duly recognised by the Rehabilitation Council of India (RCI) is 25.

SRM runs this course since 2007. Always, there is a great rush. We are among the 'Top Ten' in our country. Our students come from all over India & abroad.



Some students from  
our very first batch

The scope of this course is excellent.

All our students get a job immediately on finishing. The jobs wait for them. Some take of PG and become teachers. Many get jobs abroad - Canada, US, England and Australia. The foreign students go back to their own country & get an executive style job.

Our students are respected for their competence and skill-set.



Some first batch students visited their alma mater, a few years after passing, for a conference. Their smiles tell that they are happy, in their career.

Out of the Seven here, 3 are teachers, one is abroad, the rest occupy senior positions, in clinics, private companies and in other institutions.

## The advantages accruing to students of Audiology & Speech, in SRM Medical College

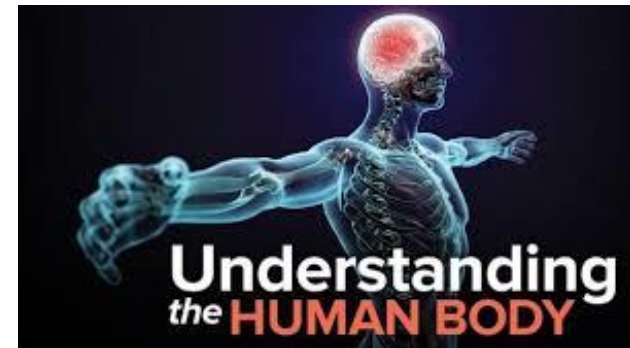


Acute trauma care training



### **OTOLARYNGOLOGY**

Integral part of ENT Dept.  
Practical training in clinics  
Variety of cases



Anatomy Physiology classes  
taken by subject experts.





Department of Audiology & Speech Language Pathology  
SRM Medical College Hospital & Research Centre

---



Collaboration foreign universities



Student exchange programme with  
La Trobe University, Melbourne

BASLP offers the following ...

Immediate job, Good pay, Dignity,  
Independent Practice opportunity  
and avenue for postgraduate studies.



**SRM**  
INSTITUTE OF SCIENCE & TECHNOLOGY  
(Deemed to be University u/s.3 of UGC Act, 1956)



Department of Audiology & Speech Language Pathology  
SRM Medical College Hospital & Research Centre

---

SRM has them all ...

Good facilities, Lot of patients, Good Teachers, Comfortable hostels, Buses for day scholars, Masters courses running in the same department, Hence high quality.

# The advantages of studying BASLP in SRM

Good facilities: Hostel, Bus, Security, Sports

Medical College



Hospital



Hostel



AC Buses







Department of Audiology & Speech Language Pathology  
SRM Medical College Hospital & Research Centre



The higher-level management wants to raise these courses to Global standards



**Make our common dreams come true**

**Give the SRM advantage to your child**

High standards are maintained.  
Excellent infra structure.  
The faculty has a high calibre.  
Equipments are the latest.  
Access given to all students.  
Research facilities

The fees are deliberately kept low,  
to enable all students to join.



**How to join  
BASLP & MASLP**



To join BASLP & MASLP in SRM  
Please contact any one of the following offices

Director Admissions, SRM University  
Kattankulathur campus

Office of the Dean Medical  
SRM Medical College Hospital & Research Centre, Kattankulathur.

Department of Audiology, & Speech Language Pathology  
SRM Medical College Hospital & Research Centre, Kattankulathur.



## How to join BASLP & MASLP

You may visit the Audiology department  
at the SRM Kattankulathur campus  
and complete all procedures



SRM Medical College Hospital & Research Centre  
Department of Audiology & Speech Language Pathology

Thank you for your time

Balakrishnan D  
Dean Medical Research, HOD of Audiology  
Prof of Audiology & ENT

## The advantages of studying in SRM

Disciplined, multicultural, safe and healthy environment. Facilities include Laboratories, Hostel, Gymnasium, Playgrounds, Hostel, holistic cultural activities. Modern library, Reading rooms, Books, International journals, National journals, Digital resources.

Medical College



Hospital



Hostel



AC Buses







Department of Audiology & Speech Language Pathology  
SRM Medical College Hospital & Research Centre

The one field which has all the advantages of Health Sciences course, is

Audiology & Speech Language Pathology



**SRM**  
INSTITUTE OF SCIENCE & TECHNOLOGY  
*(Deemed to be University u/s.3 of UGC Act, 1956)*



Department of Audiology & Speech Language Pathology  
SRM Medical College Hospital & Research Centre

---

The courses available in this department are

B.ASLP (Bachelor of audiology & Speech Language Pathology)

25 seats

4 years

MSc (Speech Language Pathology)

12 seats

2 years

MSc (Audiology)

12 seats

2 years

## BASLP is an exciting course

This course deals with Hearing, Speech, Swallowing & Balance difficulties. The patients come from the fields of Ear Nose Throat, Neurology, Paediatrics and Cancer, Stroke, and Automobile accidents. A good audiologist and speech therapist can help them to get rid of their problems. In patients, for whom complete cure is not possible, he can certainly make the quality of life better.

*For example,*

The deaf can hear.

The deaf-mute can speak.

Cancer, Stroke and accident victims can communicate well.

Patients with vertigo can walk and live well.

The stutterer can get rid of it.

Patients with ringing sounds in the ear, can get relief.

## Facilities available for studying BASLP in SRM

Staff Rooms



Class Rooms



Class Rooms



Department library with NET



Spacious cubicles with privacy to the patients,  
help the students to get more co-operation from them



Speech cubicles



Patient interview room



Audiometry

Speech therapy in progress – Students are taught to tailor the therapy to the individual patient. This helps them in later day private practice.



All modern equipment, with free access to students



Exposure to all types of clinical cases



Acute trauma patients



Rehab. centre - Free aids distribution



New born (3 day old) being screened for hearing loss

New technologies & Research initiatives



## BASLP - course description

Eight semesters (including one year of internship). The annual admissions, duly recognised by the Rehabilitation Council of India (RCI) is 25.

SRM runs this course since 2007. Always, there is a great rush. We are among the 'Top Ten' in our country. Our students come from all over India & abroad.



Some students from  
our very first batch

The scope of this course is excellent.

All our students get a job immediately on finishing. The jobs wait for them. Some take of PG and become teachers. Many get jobs abroad - Canada, US, England and Australia. The foreign students go back to their own country & get an executive style job.

Our students are respected for their competence and skill-set.



Some first batch students visited their alma mater, a few years after passing, for a conference. Their smiles tell that they are happy, in their career.

Out of the Seven here, 3 are teachers, one is abroad, the rest occupy senior positions, in clinics, private companies and in other institutions.

## MSc Audiology & MSc Speech Language Pathology

Until last year, we had a MASLP, which taught both the the subjects, combinedly. From 2019, we have bifurcated into two individual courses, in the interest of Better competence.

Both courses consist of Four semesters (2 calendar years). The annual admissions, duly recognised by the Rehabilitation Council of India (RCI) is 12. Every year, all the seats get filled. Just like BASLP, our students come from various countries.

Both courses prepare the students for a leadership role in respective speciality. After graduation, they become faculty in institutes of higher learning, and become research scholars. Several of them are well on their way to senior administrators in colleges and manufacturing companies.



**SRM**  
INSTITUTE OF SCIENCE & TECHNOLOGY  
(Deemed to be University s/s 3 of UGC Act, 1956)



Department of Audiology & Speech Language Pathology  
SRM Medical College Hospital & Research Centre

**Global – Our students come from far.**





Department of Audiology & Speech Language Pathology  
SRM Medical College Hospital & Research Centre

---



Collaboration foreign universities



Student exchange programme with  
La Trobe University, Melbourne



Department of Audiology & Speech Language Pathology  
SRM Medical College Hospital & Research Centre

Courses conducted by the dept are  
B.ASLP, MSc Aud & MSc Speech Lang Path

For further information about this department and these courses, kindly visit

<https://www.srmist.edu.in/medicine/health-science/audiology-speech-language-pathology/about>

Important note: You can even simply type SRM Audiology, in your browser and reach this web page. But, if you do this, you will have to carefully confirm, that you have indeed reached the OFFICIAL website.



Department of Audiology & Speech Language Pathology  
SRM Medical College Hospital & Research Centre

---

Thank you for visiting this page.  
For further information about this department and these courses, kindly visit

<https://www.srmist.edu.in/medicine/health-science/audiology-speech-language-pathology/about>

Important note: You can even simply type SRM Audiology, in your browser and reach this web page. But, if you do this, you will have to carefully confirm, that you have indeed reached the OFFICIAL website.